

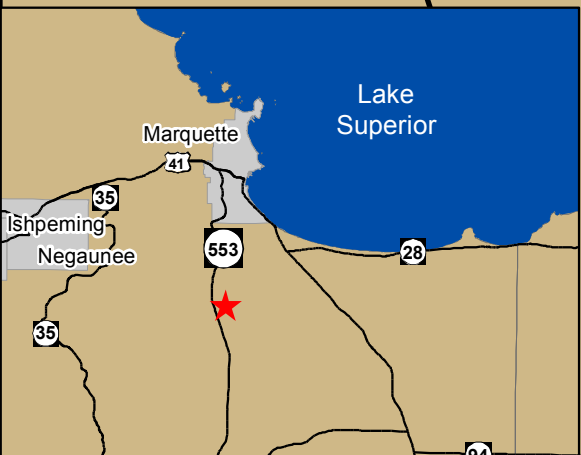
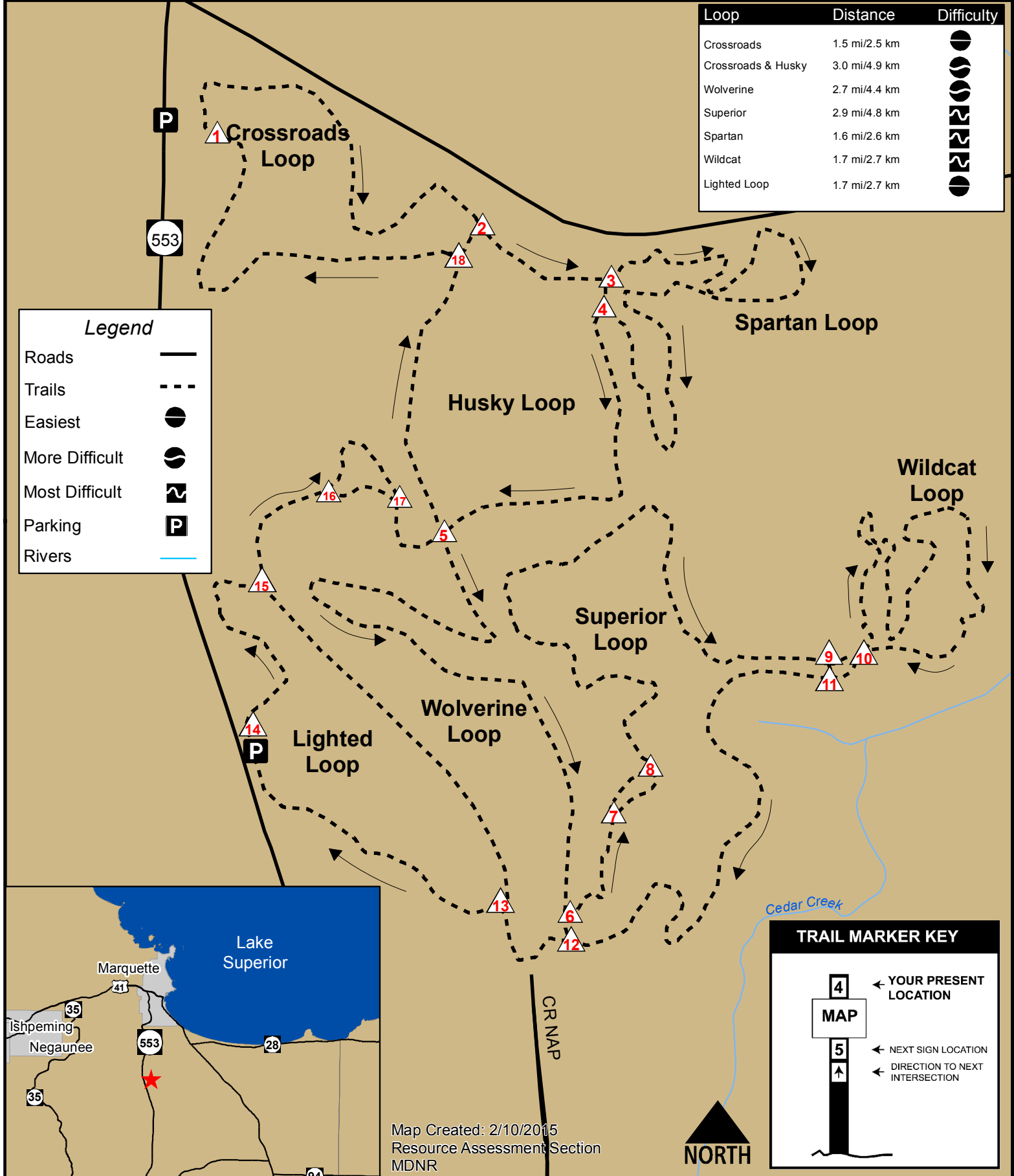


Blueberry Ridge Ski Trail

Loop	Distance	Difficulty
Crossroads	1.5 mi/2.5 km	●
Crossroads & Husky	3.0 mi/4.9 km	●●
Wolverine	2.7 mi/4.4 km	●●●
Superior	2.9 mi/4.8 km	●●●●
Spartan	1.6 mi/2.6 km	●●●●●
Wildcat	1.7 mi/2.7 km	●●●●●●
Lighted Loop	1.7 mi/2.7 km	●●●●●●●

Legend

- Roads: —
- Trails: - - -
- Easiest: ●
- More Difficult: ●●
- Most Difficult: ●●●
- Parking: P
- Rivers: — (blue)



TRAIL MARKER KEY

- 4: YOUR PRESENT LOCATION
- MAP: MAP
- 5: NEXT SIGN LOCATION
- ↑: DIRECTION TO NEXT INTERSECTION

Map Created: 2/10/2015
 Resource Assessment Section
 MDNR

